

# KOMBO SDC<sup>+</sup> 3.2

AUTOMATIC CUTTING PLOTTER  
CONVEYOR WORKING TABLE  
ELITRON TECHNOLOGY  
SEEKER SYSTEM

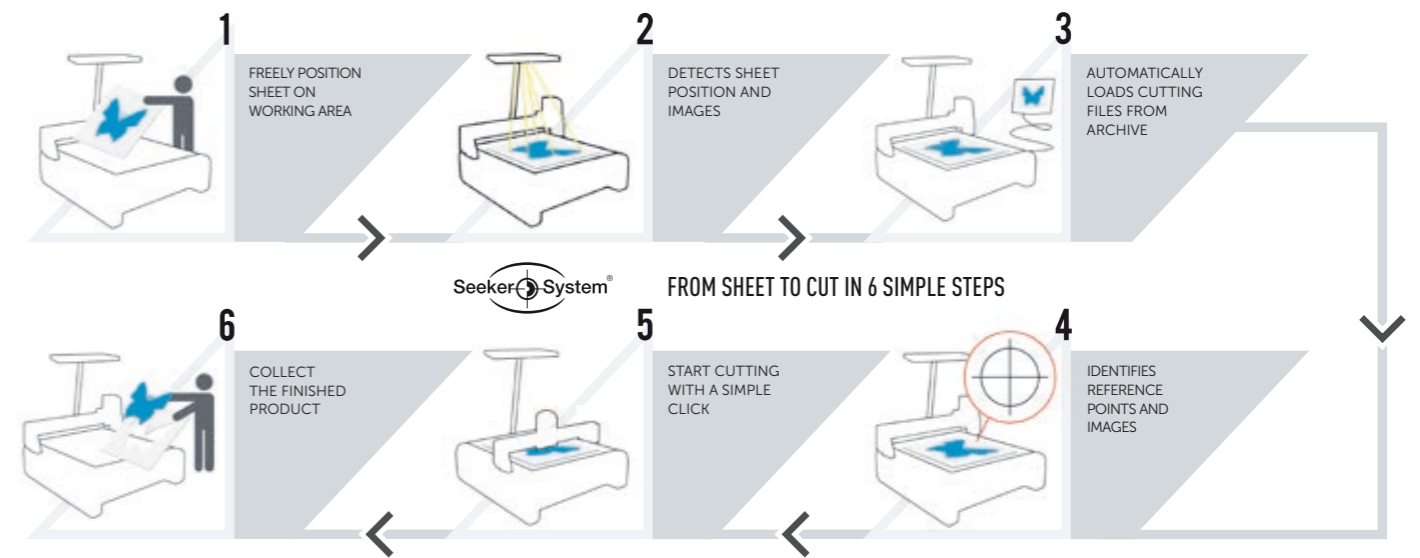


# KOMBO SDC+ 3.2

MORE PERFORMANCE  
MORE SPEED  
MORE PRODUCTIVITY

Kombo SDC+ 3.2 makes part of a new platform designed by Elitron to integrate and automate the workflow with the increasingly popular super wide format digital printers. Extremely flexible and with conveyor cutting table, Kombo SDC+ 3.2 has a 3200 x 2100 mm working area. In a market where

**competitiveness** is increasingly based on delivery **time** and **flexibility** with small/medium production batches, Kombo SDC+ 3.2 allows to work effectively with both large rolls of material and different types of rigid medias outgoing from the bigger size digital printers with excellent quality-price ratio.



## KOMBO SDC+ 3.2

### Unique for Know-How

High profile technical know-how aimed to provide suitable integrated solutions and specifications for each customer workloads.



#### Reliability

##### Honeycomb steel structure

Systems made of solid monobloc steel with a honeycomb structure designed for **industrial workloads** and to ensure **maximum duration** in time.

##### Automatic tool presetting

- **Greater precision and quality** of work.
- **Simplicity and speed** during tools change operation.



#### Versatility

##### Multi-tool head

- In order to **perform several operations** in the same working session.
- Can be equipped with up to **5 tools simultaneously**.

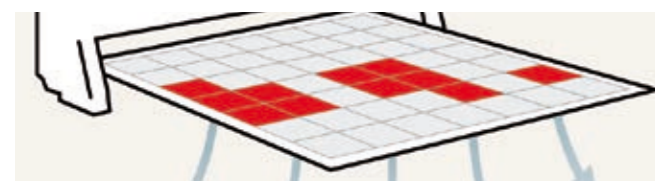
##### Different thicknesses

- Creasing, cutting and milling of materials **up to 120 mm** thick.

##### Holding clamp

- Correct feeding of the most complex materials in rolls.
- Better cutting quality.

#### Performance



##### Vacuum power

- Working area consisting of **40 sectors of concentrated localized suction**.
- Maximum grip and cutting quality even for difficult materials.

##### New motors

- Speed: **102 mt/min**, acceleration **1,4 G**.
- Better performance and reliability.
- Faster finishing even on high density materials.

##### High precision racks

- To ensure the repeatability of processing during continuous cycles without having to accept any compromises in terms of speed.

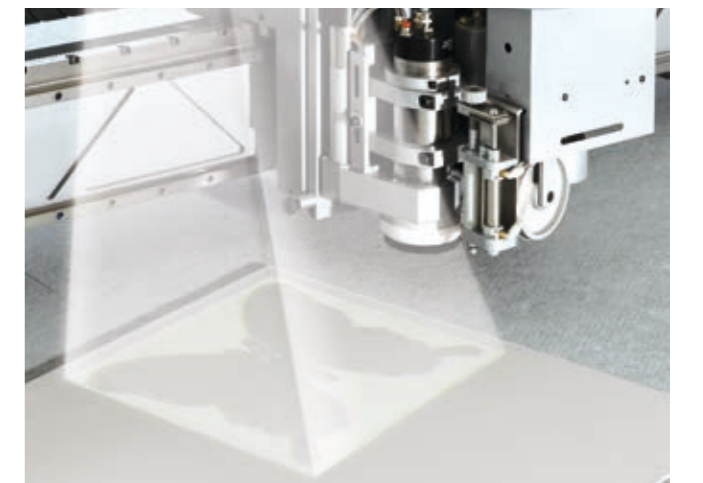


### Unique for advanced automation

#### Seeker System PRO

Cutting edge technology patented by Elitron for the automatic **detection of printed images** and reference marks

- Significant **time savings** and **simplicity of work** thanks to the free positioning of the printed panels on the cutting area.
- A **double camera** gives the system the ability to **identify the printed images** onto the material and, thanks to the exclusive **Elitron software** automatically load the cutting file related to each image to perform the work.
- A **real eye** in the service of the cutting system that can thus operate autonomously and automatically **correcting any distortions and printing errors**.



#### Video Projection system

The virtual die of the cutting path is projected on the table and the operator can freely nest/place it onto the material surface.

- Simple and fast execution of the one-shot or rapid prototyping jobs.
- Recovery of material scraps.
- Optimization of the cutting area and resultant reduction in consumption.

## PROCESSABLE MATERIALS

Possibility to work with maximum flexibility on materials commonly adopted in the **cardboard industry** and **visual communication** also using the **super wide format printing**.

- Forex
- Dibond
- PVC
- Plastics
- Films
- Re-Board
- Paper and cardboard
- Corrugated cardboard
- Foams
- Plexiglass



## APPLICATIONS

Unlimited possibilities of realization to give free rein to your creativity and implement without hesitation the proposals of each client.

- Packaging
- POS displays
- Transparent containers
- Advertising banners
- Folders
- Binders
- Boxes
- Embossed logos
- Promotional trade fair stands panels
- Promotional flags
- Brochure holders
- Many other applications



## TECHNICAL INFORMATION

Version	KOMBO SDC+ 3.2	
	Standard	With video projection *
Working Area (mm) (L x D)	3200 x 2100	
Suction sectors on working area	40	
Machine dimensions (mm) (L x D)	4500 x 2700	4700 x 3120
Machine height (mm)	1650	3550
Working area height (mm)	900	
Electric power supply	Tri-phase 400V 50Hz 20 Kw	
Pneumatic power supply	10 bar 800 l/min	

\* Optional.

The technical specifications given in the table can be updated and modified as a result of any improvement and technological development of the systems.



## HELEVA

Can be configured in synchronization with **HELEVA** loading system, in order to make the workflow even more automated, integrated and productive.



**ELITRON IPM srl**  
 Viale I Maggio, 42  
 63813 Monte Urano (FM)-Italy.

+39 0734.842221  
[www.elitron.com](http://www.elitron.com)